

# ous.property






## 2a Mountbatten Terrace Flinders Park SA

This property is a standout built by Promina Constructions and needs to be seen to be appreciated. It's Architectural design, flair and innovation sets this home apart and is sure to impress.

Boasting the finest fixtures and finishes throughout the house it sets a benchmark for prestige living and upon entry has a large glamorous kitchen with feature lighting overlooking a generous lounge room area.

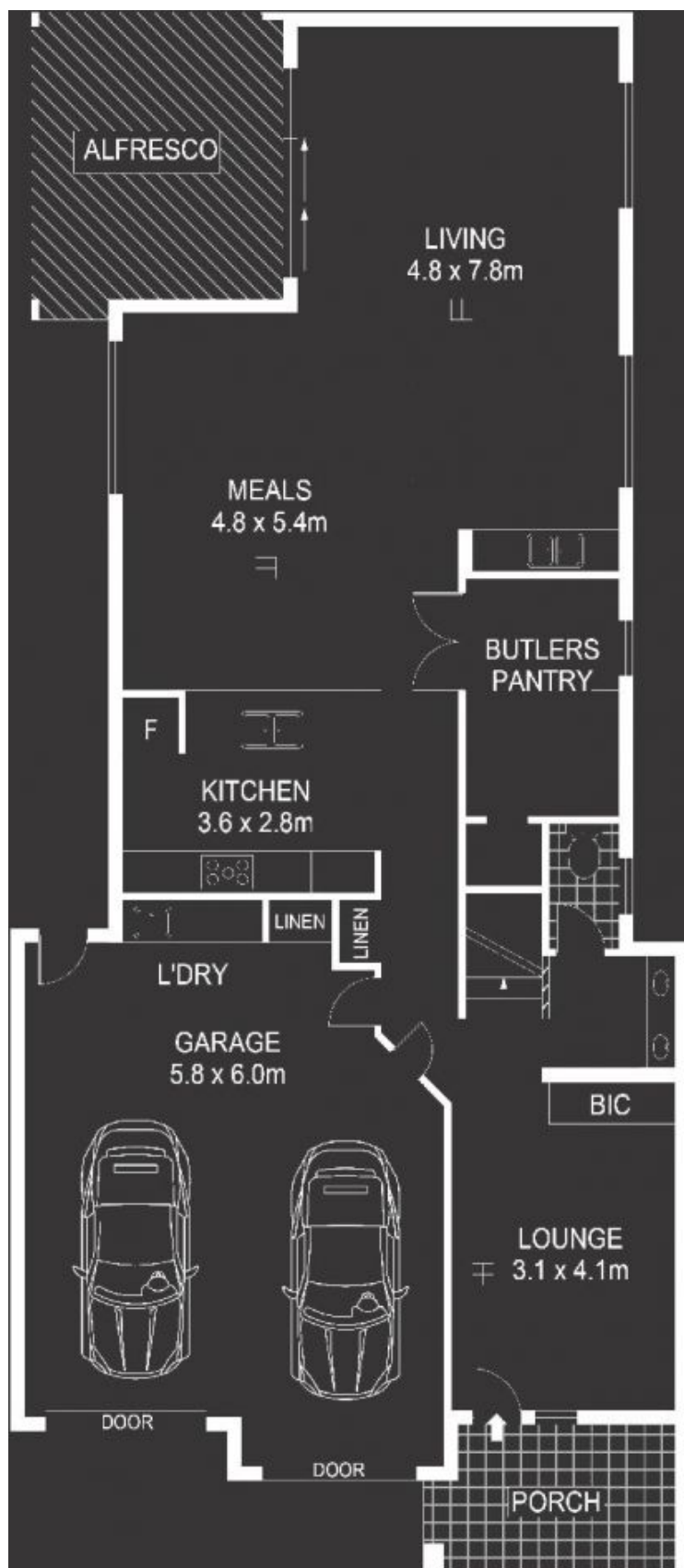
Tiled floors throughout the ground floor and a feature glass balustrade with complementary LED lighting which is a real stand out and no expense has been spared. The kitchen has been cleverly designed with state of the art appliances, glass splash backs, Caesar stone bench tops that have great function and the plenty of storage facilities.

3  2  2 

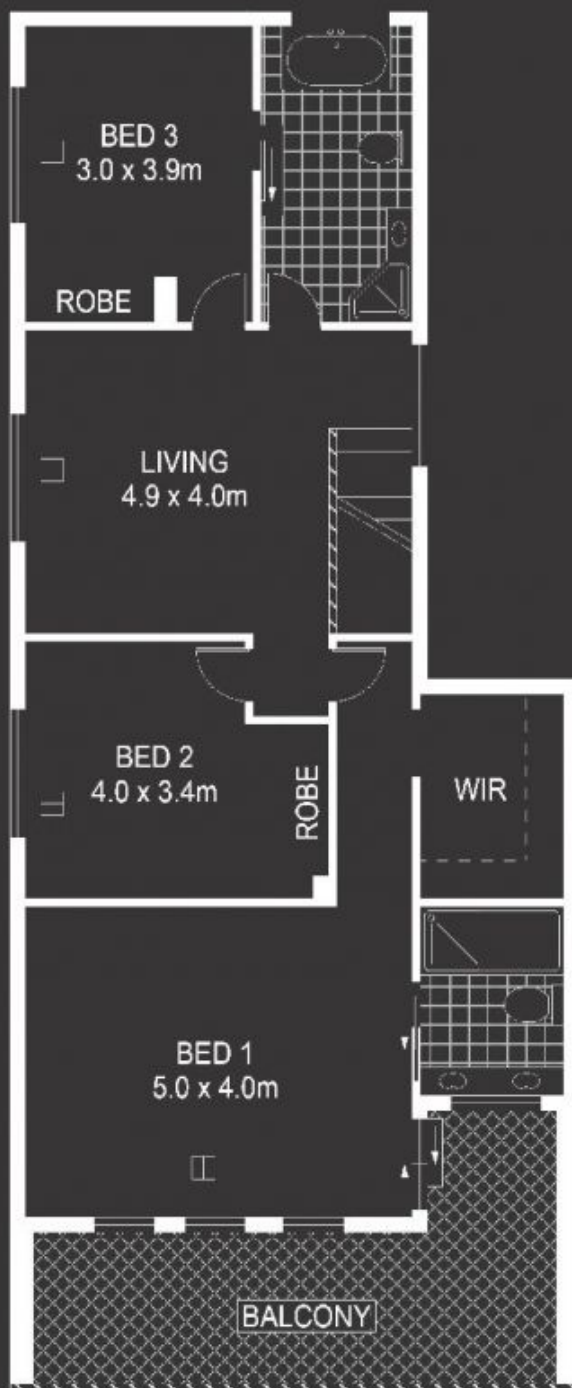
**Land Size** : 300 sqm  
**View** : <https://www.ous.property/sale/sa/western-beachside-suburbs/flinders-park/residential/house/6201589>



**Laz Ouslinis**  
**7225 9800**



GROUND FLOOR



FIRST FLOOR



Scale in metres. Indicative only. Dimensions are approximate. All information contained herein is gathered from sources we believe to be reliable. However we cannot guarantee its accuracy and interested persons should rely on their own enquiries.

INT : 195m<sup>2</sup>  
GARAGE : 43m<sup>2</sup>

2A Mountbatten Terrace, Flinders Park