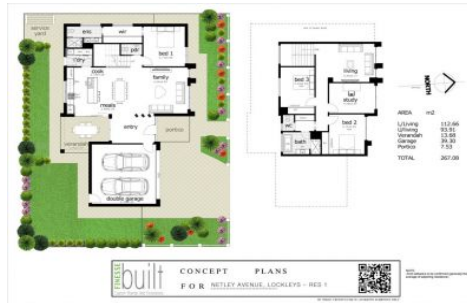


# ous . property



## 1/19 Rutland Avenue Lockleys SA

4 2 2

It is time to get excited with another impressive design and building package from Finesse Built. These homes are located and situated in one of the best pockets of Lockleys which are sure to impress the modern day family.

This is a turn key package with a real fixed move in price. I asked the builder Matt Beckwith from Finesse Built - What does this mean? "Well unlike most packages you see advertised on the web with a 'from' or '\*\$' price, this move in off plan price is fixed and you just need to bring your furniture with you."

We would love to meet with you on site or at our display home and selections are now available to choose. The multi award winning Finesse Built Homes is available throughout the week for appointments to discuss how you may customise your home. Register your interest today.

**Land Size** : 413 sqm  
**View** : <https://www.ous.property/sale/sa/western-beachside-suburbs/lockleys/residential/land/6201599>



**Laz Ouslinis**  
**7225 9800**

<https://www.ous.property>

**NETTLEY AVENUE**

**18.29m**

**22.86m**

**LOT 2  
418m<sup>2</sup>**

**22.86m**

**18.29m**

**19.81m**

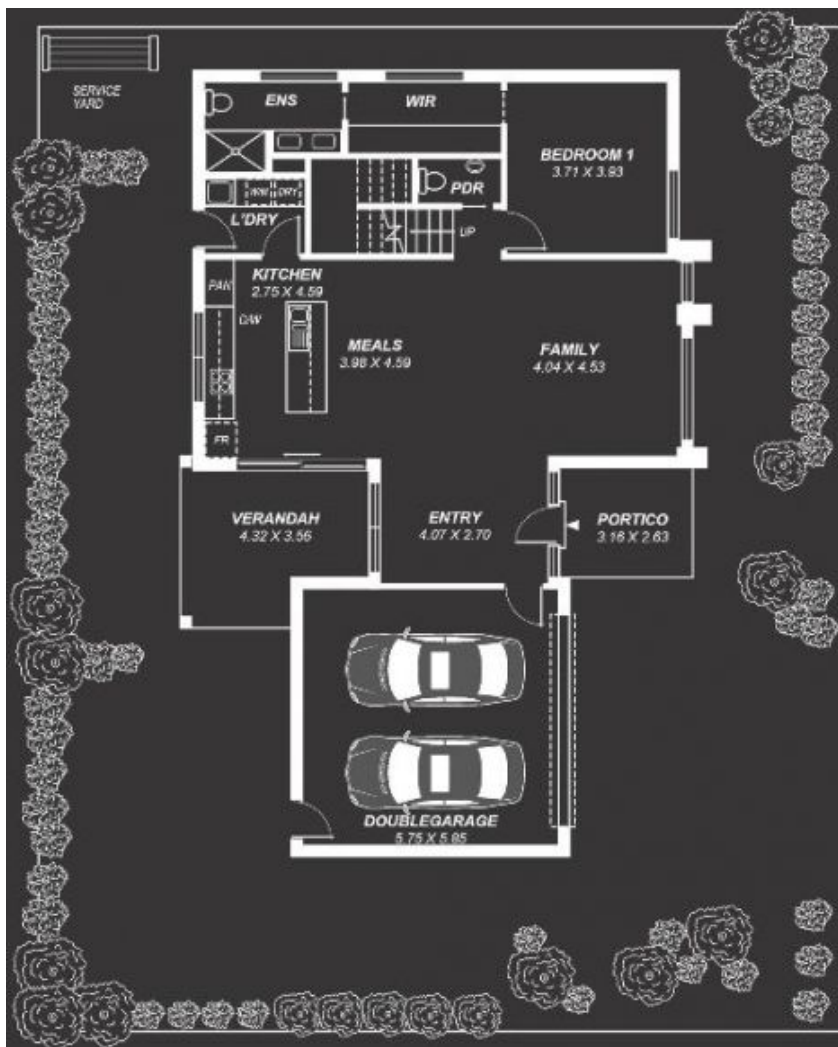
**LOT 1  
413m<sup>2</sup>**

**22.86m**

**4.31m**

**15.24m**

**RUTLAND AVENUE**



This drawing is for illustration purposes only.  
All measurements are approximate and details intended  
to be relied upon should be independently verified.

Area	m <sup>2</sup>
Living:	160.23
Portico:	8.31
Garage:	33.64
Verandah:	15.38
Total:	217.56