

ous . property



5 Petrel Court Flagstaff Hill SA

3  2  1 

This lush, beautifully landscaped 1992 built home is ideally positioned on the elevated side of a quiet cul-de-sac, in the highly sought after Craighburn Estate. Surrounded by beautiful walking trails, parks and bike tracks, the property is perfect for either a young family or those looking to retire in the picturesque Adelaide Hills.

This low maintenance home offers both flexibility and convenience, with 3 generous sized bedrooms, two bathrooms, reverse cycle air conditioning, walk in robe in main bedroom and two light filled living areas overlooking the beautifully maintained gardens.

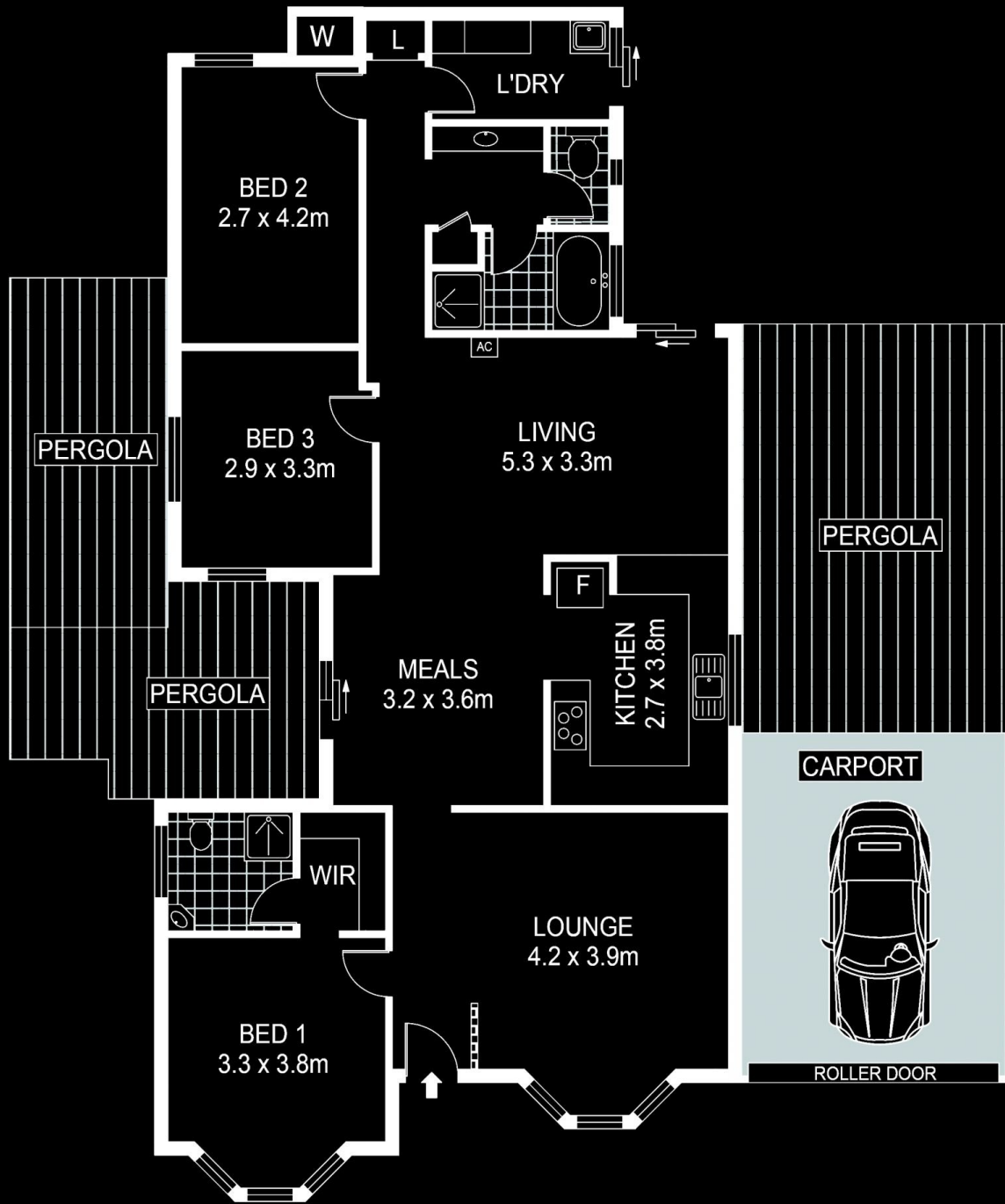
The property has a stunning mix of old and new, with feature cork flooring and a newly updated spacious kitchen.

Land Size : 495 sqm
View : <https://www.ous.property/sale/sa/south-south-east-suburbs/flagstaff-hill/residential/house/6201613>



Laz Ouslinis
7225 9800

2.4 x 1.5m



Scale in metres. Indicative only. Dimensions are approximate. All information contained herein is gathered from sources we believe to be reliable. However we cannot guarantee its accuracy and interested persons should rely on their own enquiries

INT : 118m²

5 Petrel Court, Flagstaff Hill