

ous.property



20 Crace Road Fulham SA

5 4 4

Family buyers and professionals will love the location of this luxury home close to the beach, Linear Park, local schools, reserves and family-friendly playgrounds within a popular suburb on the cusp of prestigious Henley Beach South.

Built in 2015 by custom builder Grand Designer Homes, the 715sqm allotment (approx.) boasts a long list of remarkable features providing a quality lifestyle in an enviable location. Flawlessly finished to impeccable standards, the five bedroom floorplan includes an office and four bedrooms under the main roof, while the inclusion of an external rumpus room/shed with a guest bedroom and ensuite makes the easy transition to a five bedroom home.

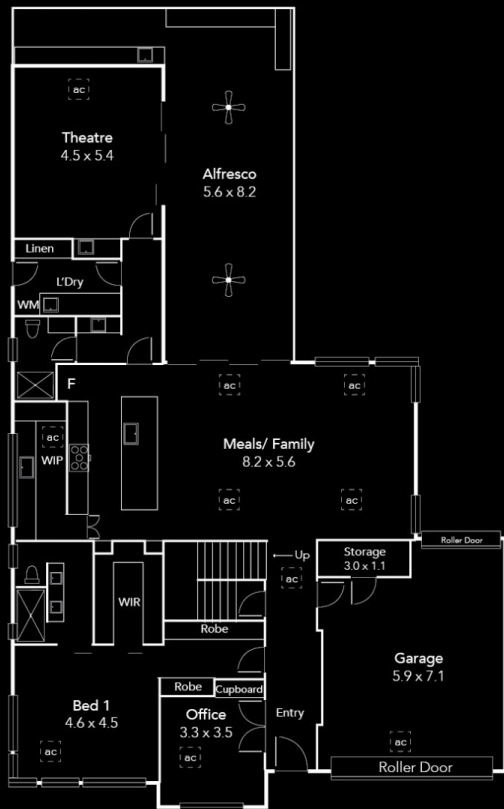
Many distinctive characteristics contribute to this fine property's significant appeal. Highlights include:

Price : \$ 1,852,000
Land Size : 715 sqm
View : <https://www.ous.property/sale/sa/western-beachside-suburbs/fulham/residential/house/6201664>

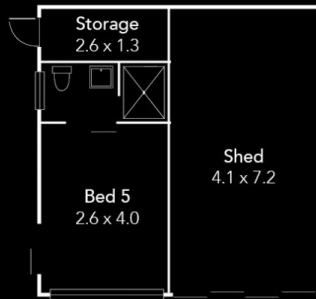


Laz Ouslinis
7225 9800

<https://www.ous.property>



Ground Floor



Back Rumpus
(not in actual position)

Area (Estimate only)	
Ground Floor	212.20 m ²
First Floor	93.56 m ²
Garage/ Back Rumpus	88.25 m ²
Alfresco	60.15 m ²
Portico	4.80 m ²
Total	466.96 m ²

* To check measurements...



Please ask your agent
for a tape measure



First Floor