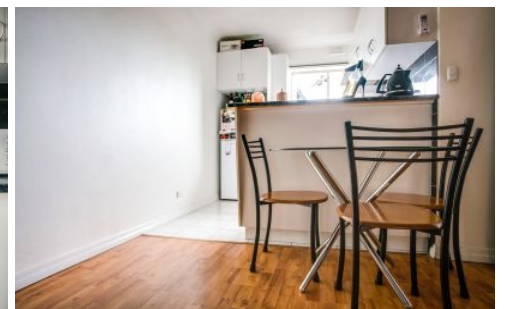


ous . property



11/280A Days Road Angle Park SA

2  **1**  **1** 

Conveniently located near the Regency Park Golf Course, this two bedroom's upstairs unit is a city commuters dream.

Your greeted by a spacious open plan kitchen/living area and two well sized bedrooms with built in robe's to the master. A Split System Air conditioner to the main living area provides year round comfort.

It's hard not to feel at home in this wonderfully maintained and low maintenance home.

- Split System AC to lounge
- Built in Robes to Master Bedroom
- Gas cooking & Gas HWS
- Ample cupboard space
- Private parking space
- Only 15 mins from the Beach/City

Building Size : 62 sqm

Land Size : 16 sqm

View : <https://www.ous.property/lease/sa/western-beachside-suburbs/angle-park/residential/unit/6201776>

<https://www.ous.property>