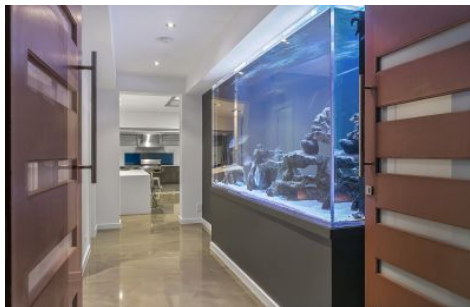


ous.property



3 Albany Street Grange SA

4 3 2

Complementing this home's imposing street presence is a marine heritage, hardwood bridge utilising salvaged timbers from the iconic Henley, Grange & Pt Lincoln jetties. Electric blue feature lights emphasise the home's built-form & set the theme for what lies beyond the double entry front doors.

Upon entry, guests are overawed by one of the largest home aquariums in Adelaide; a truly unique opportunity to personalise this home & an indication of the quality & value of the extensive features to be found throughout this "built to own" residence.

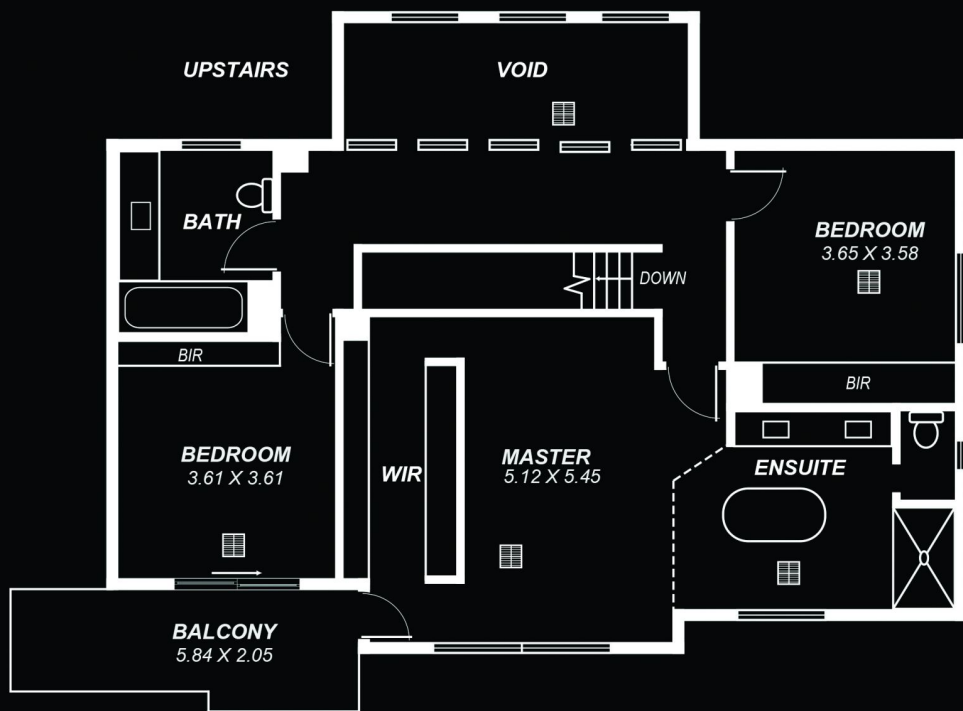
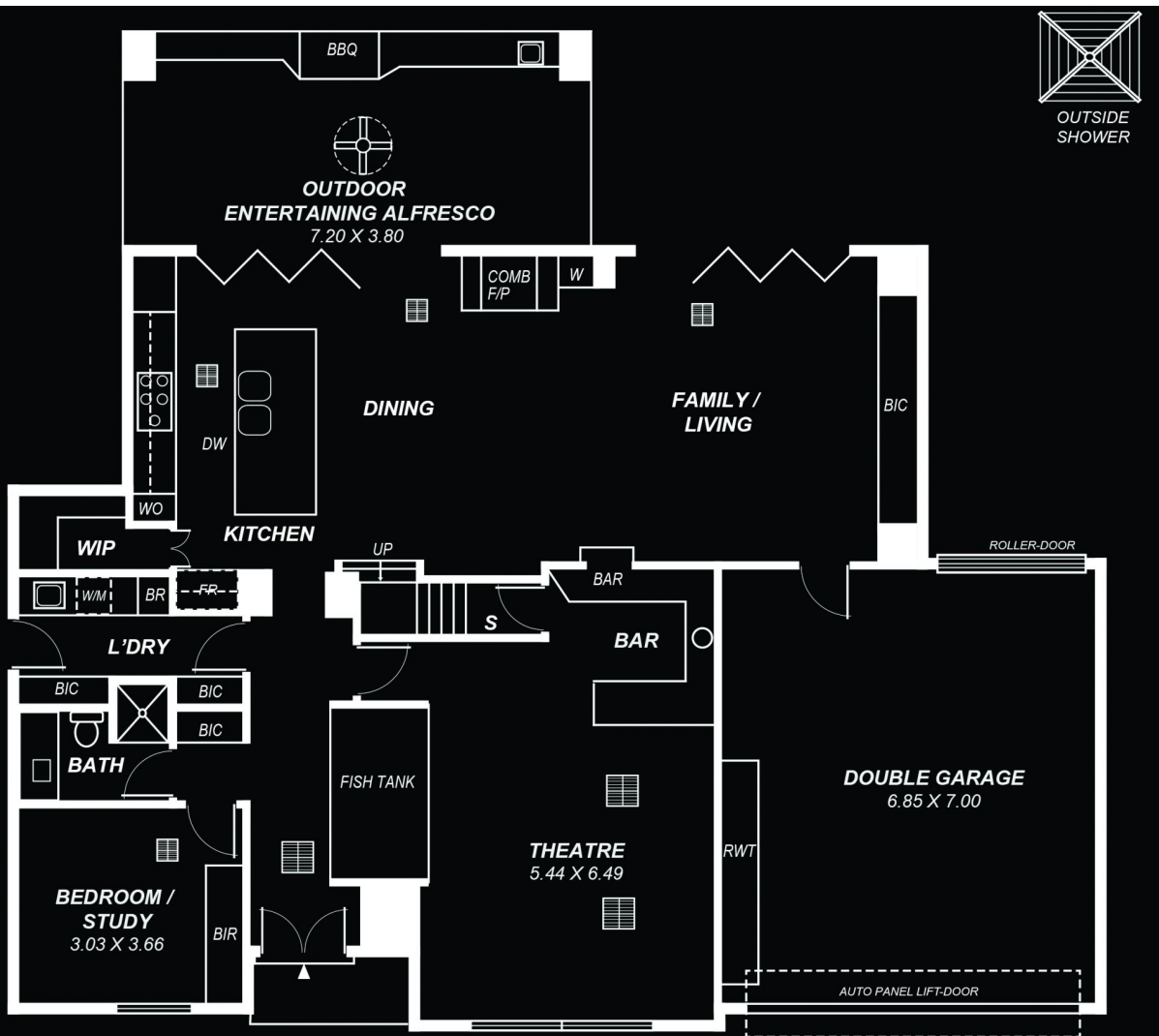
The well-conceived floor plan is full of architectural surprises. The lower level is defined by ultra-modern surfaces & finishes such as the epoxy resin designer concrete floor, floor to ceiling 2-pac cabinetry, full height

Price : \$ 1,421,000
Building Size : 385 sqm
Land Size : 441 sqm
View : <https://www.ous.property/sale/sa/western-beachside-suburbs/grange/residential/house/6201792>



Laz Ouslinis
7225 9800

<https://www.ous.property>



Area	m ²
Lower Living:	173.48
Upper Living:	135.84
Garage:	47.95
Outdoor:	27.36
Balcony:	11.97
Total:	396.60

This drawing is for illustration purposes only.
All measurements are approximate and details intended
to be relied upon should be independently verified.