

# ous . property



121A/121B Tapleys Hill Road Glenelg North SA

3 2 1

If location, lifestyle and stylish executive living are top of your list, this semi-detached 2018-built townhouse is a fantastic opportunity to secure your perfect new home.

In a location that is hard to beat, it is well placed to enjoy the benefits of a remarkable seaside suburb which boasts serene coastal beauty along with a cosmopolitan lifestyle afforded by the local café culture, boutique shopping and restaurant dining.

In a small group of four, this low-maintenance contemporary design impresses with stunning open-plan living spaces, classic alfresco dining, luxurious fixtures and fittings and sophisticated décor.

The downstairs living areas boast quality floating floors contrasting beautifully with the crisp interior colour

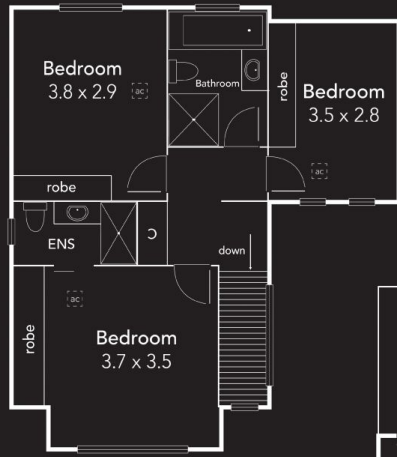
**Price** : \$ 445,000

**View** : <https://www.ous.property/sale/sa/western-beachs/ide-suburbs/glenelg-north/residential/house/6201901>



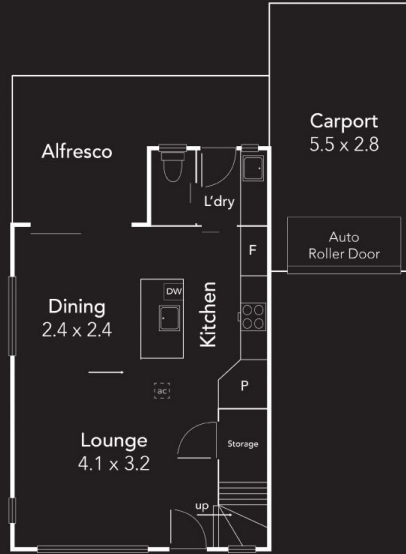
**Laz Ouslinis**  
7225 9800

<https://www.ous.property>



Upper Level

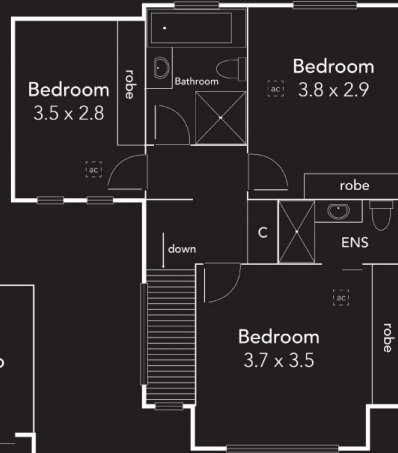
Area (Estimate only)	
Living	104.02 m <sup>2</sup>
Alfresco	11.38 m <sup>2</sup>
Carpport	18.53 m <sup>2</sup>
<b>Total</b>	<b>133.93 m<sup>2</sup></b>



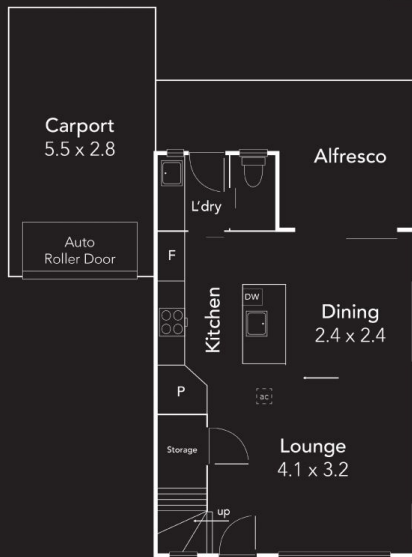
Lower Level

\*This drawing is for illustration purposes only. All measurements are approximate and details intended to be relied upon should be independently verified.

Area (Estimate only)	
Living	104.02 m <sup>2</sup>
Alfresco	11.38 m <sup>2</sup>
Carpport	18.53 m <sup>2</sup>
<b>Total</b>	<b>133.93 m<sup>2</sup></b>



Upper Level



Lower Level

\*This drawing is for illustration purposes only. All measurements are approximate and details intended to be relied upon should be independently verified.