

# ous . property



## 20 Maple Avenue Royal Park SA

3 2 2

Designed with a fun family lifestyle in mind, this exceptional property on a 507m<sup>2</sup> block (approx.) boasts fabulous covered outdoor areas for entertaining and relaxed family time.

Behind the fully enclosed front yard & double carport with roller doors extends a sensational pergola - simply perfect for all your outdoor activities and large-scale, year-round entertaining. The low-maintenance yard includes a significant storage shed, privacy screens, a shaded garden gazebo, and on-trend artificial turf.

The separate lounge is the ideal spot for relaxing with a cuppa away from the kids. Along with spacious open plan living, this family home is certainly designed for stylish comfort with room to move.

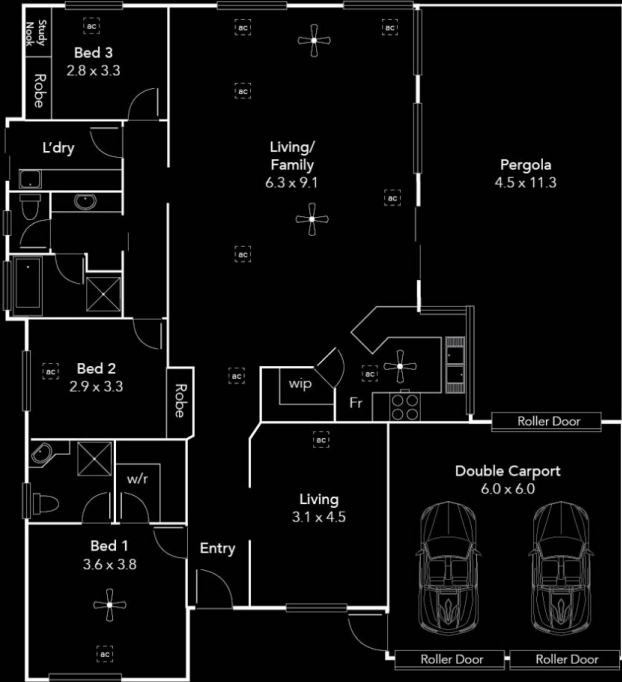
**Price** : \$ 615,000  
**Land Size** : 507 sqm  
**View** : <https://www.ous.property/sale/sa/western-beachside-suburbs/royal-park/residential/house/6202241>



**Laz Ouslinis**  
7225 9800



**Nick Tuck**  
7225 9800



Area (Estimate only)	
Living	164.87 m <sup>2</sup>
Verandah/Pergola	56.88 m <sup>2</sup>
Carport	36.0 m <sup>2</sup>
<b>Total</b>	<b>257.75 m<sup>2</sup></b>

\* To check measurements...



Please ask your agent for a tape measure