

ous . property



15B Fawnbrake Crescent West Beach SA

4 🚗 3 🚗 2 🚗

Fawnbrake Crescent has some truly beautiful new houses & this home does not disappoint. Located a short 30 second walk to Linear Park Walking Trail where you can enjoy mornings walking & evenings taking your kids down to the river to pat the horses. The escape from life whilst walking along the wetlands is truly relaxing.

So close to Adelaide Airport, West Beach and the City of Adelaide.

The house itself is gorgeous. The attention to detail is present in every room. Split over two levels of family living, the design is impressive & there is plenty of room for the entire family. The perfect combination of heritage & modern styles.

On the ground level you will find a huge open plan

Land Size : 369 sqm
View : <https://www.ous.property/lease/sa/western-beachside-suburbs/west-beach/residential/house/6908034>

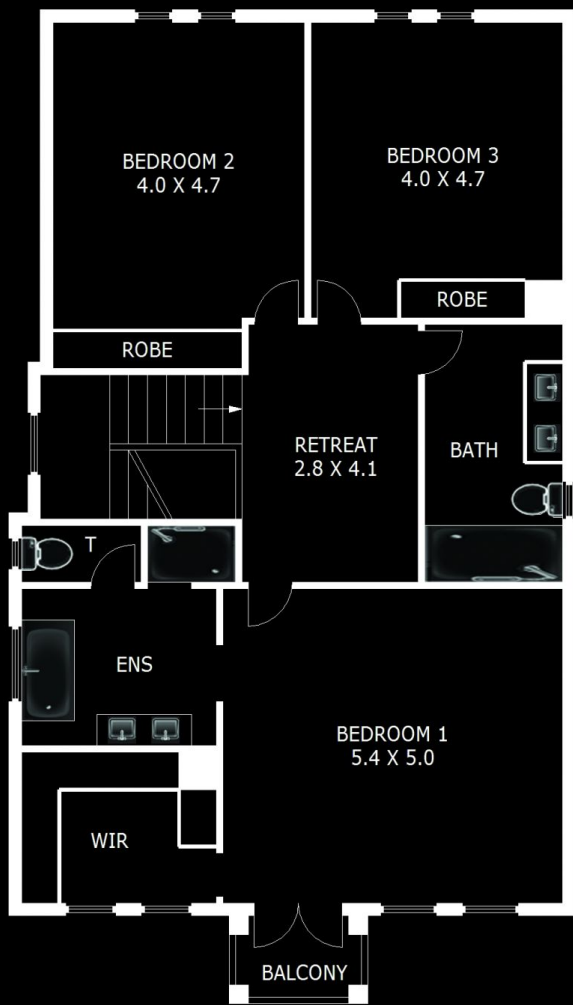


Lisa Kernot
7225 9800

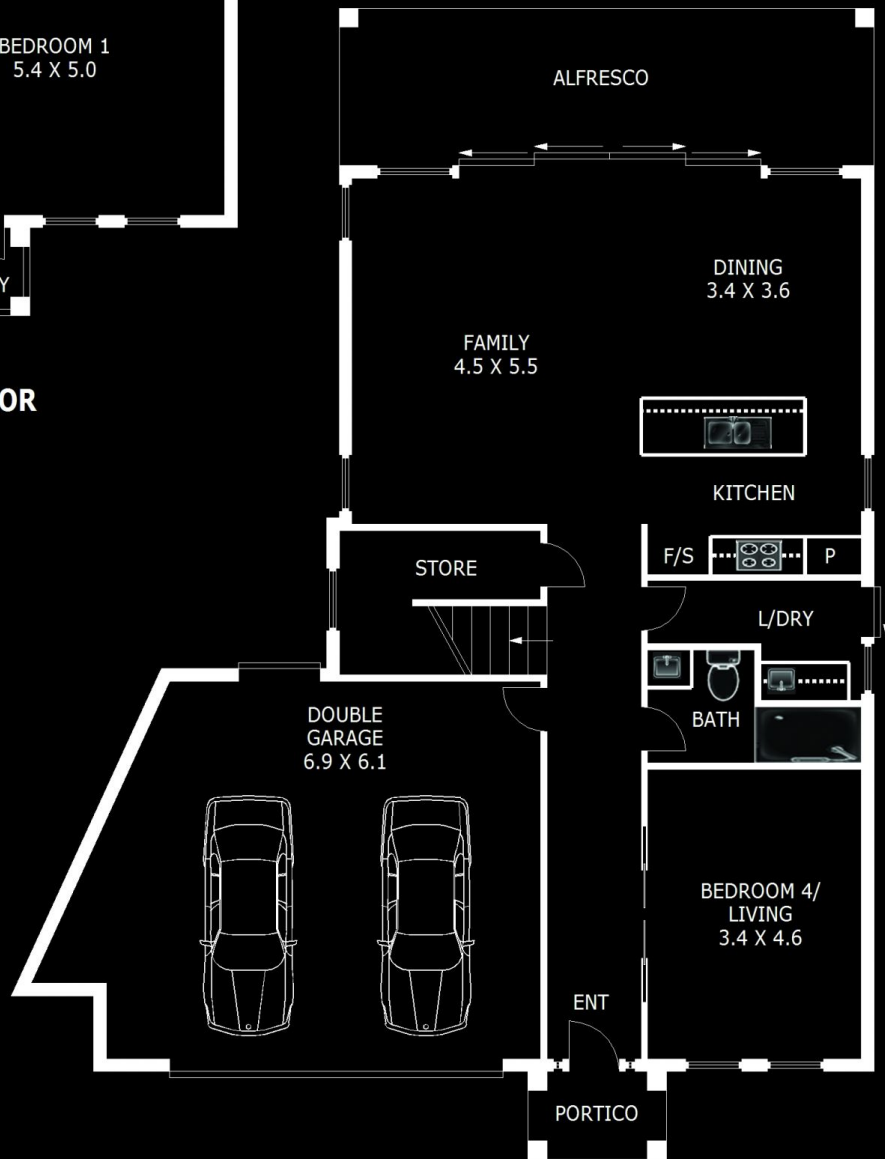


Savvina Kouros
7225 9800

<https://www.ous.property>



UPPER FLOOR



GROUND FLOOR