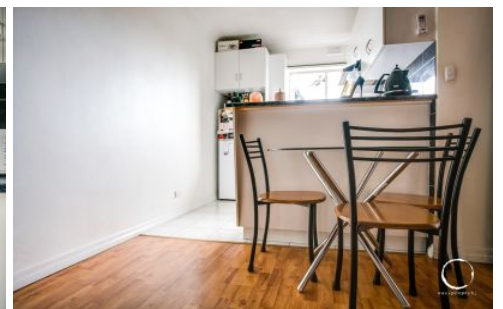


# ous . property



11/280A Days Road Angle Park SA

2 1 1

Conveniently located near the Regency Park Golf Course, this two bedroom upstairs unit is a city commuters dream.

Your greeted by a spacious open plan kitchen/living area and two well sized bedrooms with built in robe's to the master.

A Split System Air conditioner to the main living area provides year round comfort.

You will feel right at home in this light filled low maintenance home

- Split System AC to lounge
- Mirrored built in robes to the master bedroom
- Gas cooking & Gas HWS
- Ample cupboard space

**Building Size** : 62 sqm  
**Land Size** : 16 sqm  
**View** : <https://www.ous.property/lease/sa/western-beachside-suburbs/angle-park/residential/unit/7053693>



**Lisa Kernot**  
7225 9800

<https://www.ous.property>