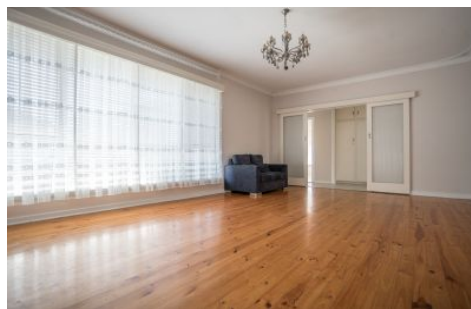


ous . property



57 Fulham Park Drive Lockleys SA

3  1  2 

This Quaint family home in the beautiful suburb of Lockleys is a stone's throw from the Linear Park bike track and within walking distance of the Fulham Park Preschool.

Stepping through to the light-filled living area you'll feel right at home with the creature comforts you have come to expect like reverse cycle air-conditioning and the timeless polished floorboards accenting character and charm throughout.

The recently updated kitchen offers an abundance of cupboard space and sets the scene for the perfect family dinner.

Features Include:

- Updated Kitchen with Stainless Steel Appliances

Building Size : 138 sqm
Land Size : 775 sqm
View : <https://www.ous.property/lease/sa/western-beachside-suburbs/lockleys/residential/house/7275632>



Lisa Kernot
7225 9800

<https://www.ous.property>