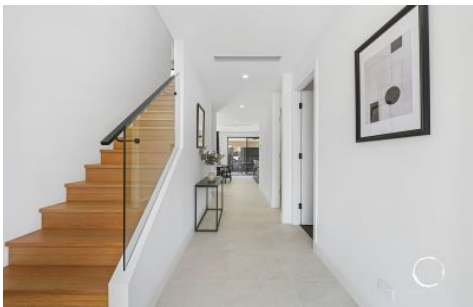


ous.property



220A Military Road Henley Beach SA

4 2 2

Welcome to the latest in residential artistry - a brand-new home at 220A Military Road, Henley Beach - built by renowned boutique builders Aspec Homes. Nestled in the ever-coveted Military Road, Henley Beach - this is that rare opportunity to immerse yourself in the intoxicating charm of coastal living.

This architectural gem is simply built to impress, and it does so with a quiet confidence. A fresh face in a tightly-held suburb, it's set to command every bit of attention it receives. The home's facade, rendered and sharp, with feature weatherboard cladding - setting the tone for the chic surprises that lie within. From the moment you cross the threshold, the property invites you into a modern mosaic of light, space and style.

Inside, a carefully-crafted floorplan unfolds over two

Land Size : 304 sqm
View : <https://www.ous.property/sale/sa/western-beachside-suburbs/henley-beach/residential/house/7915566>



Laz Ouslinis
7225 9800



Desi Moutzouris
7225 9800

<https://www.ous.property>

Area (Estimate only)	
L/Living	115.55 m²
U/Living	92.04 m²
Porch	6.39 m²
Garage	38.22 m²
Alfresco	15.50 m²
Total	267.70 m²

*To check measurements

